

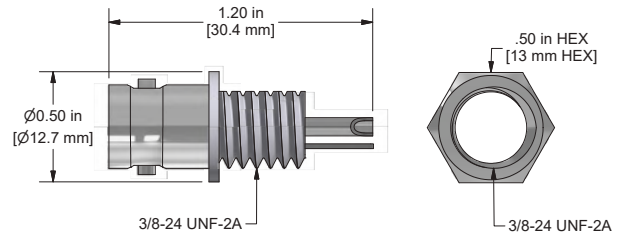
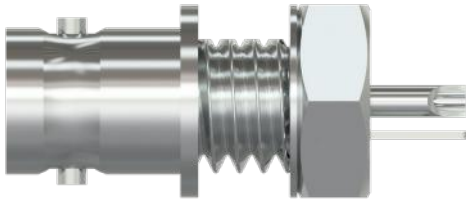
# BNC Accessories

BNC Interface Options for CTC Enclosures



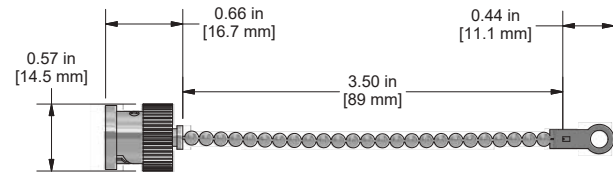
## JB901-1A

BNC Panel Mount Jack



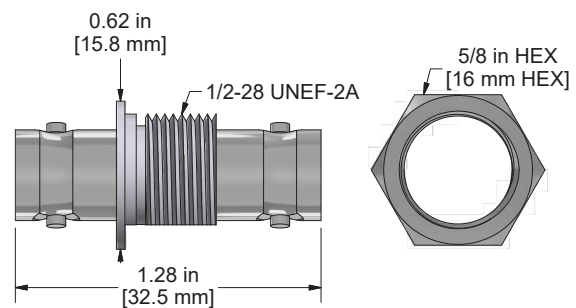
## JB902-1A

BNC Cap Cover with Chain



## JB906-1A

BNC to BNC Bulk Head Connector



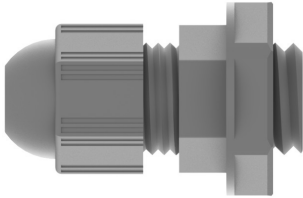
Backed by our Unconditional Lifetime Warranty

[www.ctconline.com](http://www.ctconline.com) | [sales@ctconline.com](mailto:sales@ctconline.com) | 585-924-5900

# Cord Grips



## JB903-1A



### Product Features

Nylon cord grip for cable diameters  
0.118 in. - 0.25 in. (3.00 mm - 6.35 mm)

For use with fiberglass or stainless steel  
enclosures

## JB940-1A

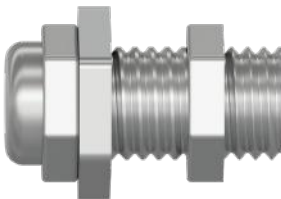


### Product Features

Stainless steel cord grip for cable diameters  
0.118 in. - 0.25 in. (3.00 mm - 6.35 mm)

For use with stainless steel enclosures only

## JB940-2A



### Product Features

Nickel-plated brass cord grips for cable  
diameters 0.118 in. - 0.250 in. (3.00 mm - 6.35 mm)

For use with stainless steel enclosures only

Backed by our Unconditional Lifetime Warranty

[www.ctconline.com](http://www.ctconline.com) | [sales@ctconline.com](mailto:sales@ctconline.com) | 585-924-5900

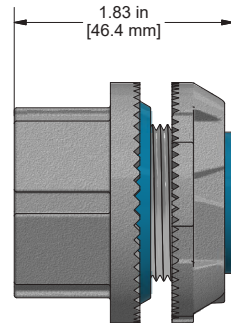
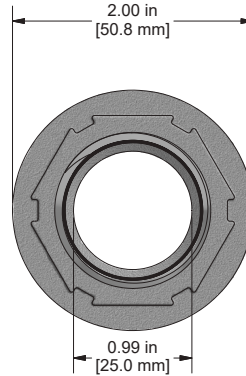
# JB938

Rigid Body Conduit Fitting



## JB938-1A

1 inch Rigid Body Conduit Fitting



## JB938-2A

1¼ inch Rigid Body Conduit Fitting

